



CITIZENS' BOND OVERSIGHT COMMITTEE

BOND UPDATE PRESENTATION

Rowland Unified School District

Meeting No. 21

September 26, 2013



Program Update: AGENDA

A. Program Update

B. Financial Report

C. Project Expenditure Report

A. Program Update

Schedule

Projects (since Summer 2009)

PHASE 1 (2009)	PHASE 2 (2010)	PHASE 3 (2011)	PHASE 4 (2012)			PHASE 5 (2013)	PHASE 6 (2013-14)
			Winter/Spring	Summer	Fall	Winter/Spring	
<i>NHS - Autoshop</i>	<i>Blandford ES</i>	<i>Telesis - Phase 1</i>	<i>Yorbita ES*</i>	Rowland HS			NHS Revival***
<i>NHS - Utilities</i>	<i>RHS - Culinary</i>	<i>Villacorta ES*</i>	<i>Killian ES**</i>	<i>Rorimer ES*</i>		<i>Rowland ES**</i>	ES Kindergarten Classrooms***
<i>Ybarra Academy</i>	<i>Hurley ES</i>	<i>Northam ES*</i>	<i>Telesis - Phase 2</i>	<i>Shelyn ES**</i>			Santana HS***
	<i>Giano IS</i>	<i>Jellick ES**</i>		<i>Hollingworth ES</i>			
	<i>Jellick - Portables</i>	<i>Alvarado IS</i>		<i>Giano IS Asphalt/Concrete Repair</i>			
	<i>NHS - Portables</i>	<i>Oswalt Academy</i>	"Beautification" Projects (e.g. Exterior Paint)				
		<i>Nogales HS</i>	"Legacy" Projects (e.g. Mechanical ductwork replacement)				

Notes:

- 1. Bold** = Under Construction
- 2. Bold Italics** = Completed
- 3. [School Name]*** = Relocate to La Seda ES during construction
- 4. [School Name]**** = Relocate to Farjardo ES during construction
- 5. Nogales HS** = Multiple Projects (Remaining Modernization, Library, CTE: Business)
- 6. Rowland HS** = Multiple Projects (Modernization, CTE: Business)
- 7. [School Name]***** = Cost Estimates complete for NHS Revival and ES Kindergarten; Santana HS use in review



A. Program Update

Project Status Report – 9/26/2013

Project Name	Status	Bids Due	Award Date	Construction Dates	Committed/ Est. Cost at Completion*
Rowland High School / CTE Business					
Partial Modernization	60%		Jun 12, 2012	Jun 2012 – Mar 2014	\$8,256,322/ \$8,506,322
Rowland ES					
Partial Modernization	Occupied; Punch List		Dec 4, 2012	Dec 2012 – Jun 2013	\$2,915,612/ \$3,385,112
Nogales HS Revival and Box Culvert					
Partial Modernization	Advertising for Bids	Oct 29, 2013	Nov 12, 2013	Nov 2013 – Dec 2015	\$30,750,000**
Kindergarten Projects					
Multiple Sites (12)	In DSA Review	TBD	TBD	Feb 2014 – Jan 2015	\$6,500,000**

Notes:

1. * = Main Contractor Construction Commitments / Commitments with Pending Change Orders
2. ** = Construction Cost Estimate



B. Financial Report

Budget

Project Funding Sources

Sources	Amount
Measure R 2006 Bond	\$ 117,980,000
Interest Funds	\$ 6,232,000
Revenue Sources – Partial State Funds^	\$ 21,755,723
Other District Sources	\$ 2,100,000
Federal Stimulus Funds	Included in Bond
Available Revenue:	\$ 148,067,723
Revenue Sources – Remaining State Funds^	\$ 1,072,000
Total Revenue:	\$ 149,139,723

^Note: The District is pursuing the remaining available State funds, but not relying on it to complete the current scope of work of the Program.



B. Financial Report

Financial Summary: 06/30/2013

For the Period Ended June 30th, 2013

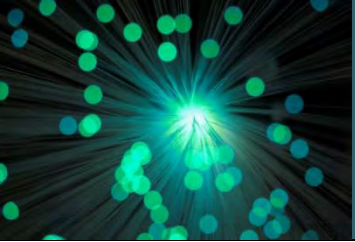
BEGINNING FUND BALANCE: JULY 1, 2012	\$ 71,964,901
REVENUE	
Interest – July 2012 to June 30, 2013	\$ 403,493
Reimbursement from State Funding	\$ 1,380,999
 LESS: EXPENDITURES PAID (Total All)	
July 1, 2012 to June 30th, 2013	<u>\$ 23,805,277</u>
FUND BALANCE AS OF June 30, 2013	
MEASURE R 2006	\$49,944,165



B. Fiscal Services

Financial Summary: 6/30/2013 (cont.)

	Expenditures paid - July 2012 to June 2013	2012-13	2011-12
90300	Stadium - Nogales, Rowland HS	0	0
90301	Library Modernization	52,102	133,494
90302	Playground - La Seda Elementary	0	0
90303	Cover Walkway - Rowland Elementary	0	0
90304	Multi-Purpose/Kitchen - Villacorta Elementary	3,642	0
90305	Library Renovation - Nogales High School	1,814,053	454,011
90307	Curb Appeal/Fencing	0	0
90308	K-8 Conversion - Ybarra/Oswalt El. Schools/Rincon	28,452	84,184
90309	Career Tech - Nogales/Rowland High Schools: Auto/Cul.	2,600	33,058
90310	New Construction - Oswalt Academy	3,275,095	752,540
90312	Kindergarten Mod	217,707	37,862
90313	NHS Revival Mod	538,595	335,453
90319	Career Tech - Nogales/Rowland High Schools: Business	0	0
90400	Modernization	17,351,631	17,993,345
90200	Program Management	521,400	517,055
	TOTALS	23,805,277	20,341,002
	Fund 35.0 (State Matching Funds – C.T.E.) &(Modernization)	9,682,567	9,597,444
	Trailers Paid by Fund 25.0 (Developer Fees)	87,114	91,603



B. Financial Report

Financial Summary: 08/31/2013

For the Period Ended August 31st, 2013

BEGINNING FUND BALANCE: JULY 1, 2013	\$ 49,944,165
REVENUE	
Interest – July 2013 to August 31,2013	\$ 0
LESS: EXPENDITURES PAID (Total All)	
July 1, 2013 to August 31 st ,2013	<u>\$ 1,128,797</u>
FUND BALANCE AS OF August 31, 2013	
MEASURE R 2006	\$ 48,815,368

B. Financial Report

Financial Summary: 8/31/2013 (cont.)

	Expenditures paid - July 2013 to August 2013	2013-14	2012-13
90300	Stadium - Nogales, Rowland HS	0	0
90301	Library Modernization	0	52,102
90302	Playground - La Seda Elementary	0	0
90303	Cover Walkway - Rowland Elementary	0	0
90304	Multi-Purpose/Kitchen - Villacorta Elementary	0	3,642
90305	Library Renovation - Nogales High School	680	1,814,053
90307	Curb Appeal/Fencing	0	0
90308	K-8 Conversion - Ybarra/Oswalt El. Schools/Rincon	0	28,452
90309	Career Tech - Nogales/Rowland High Schools: Auto/Cul.	0	2,600
90310	New Construction - Oswalt Academy	188	3,275,095
90312	Kindergarten Mod	143	217,707
90313	NHS Revival Mod	241,623	538,595
90319	Career Tech - Nogales/Rowland High Schools: Business	75,108	0
90400	Modernization	767,605	17,351,631
90200	Program Management	43,450	521,400
	TOTALS	1,128,797	805,277
	Fund 35.0 (State Matching Funds – C.T.E.) &(Modernization)	0	9,682,567
	Trailers Paid by Fund 25.0 (Developer Fees)	0	87,114



C. Project Expenditure Report As of 9-19-13

Description	Committed	Expended
Site	\$1,409,778	\$1,293,608
Planning	\$19,300,200	\$17,224,047
Construction	\$84,734,894	\$78,314,577
Testing	\$662,728	\$542,044
Inspection	\$2,715,753	\$2,460,214
Furniture & Equipment (F&E)	\$1,065,277	\$1,039,223
2006 Bond Totals	\$109,888,630	\$100,873,713



CBOC Program Update

Questions?



Citizens' Bond Oversight Committee Measure R 2006 – 9/26/2013



THANK you



ERICKSON-HALL
PROGRAM MANAGEMENT

